

BUSINESS SOFTWARE FOR MANUFACTURERS AND DISTRIBUTORS



Product Overview

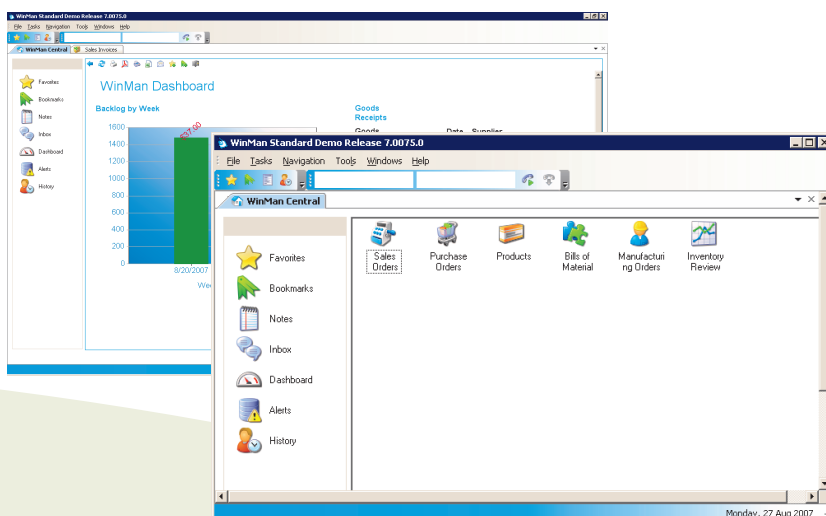
VisualQueueERP[®] is a functionally rich, high performance system supporting traditional (push), modern lean (pull), JIT, agile and flow manufacturing processes.

With its 100% Microsoft .NET lineage and its MS SQL relational database, *VisualQueueERP*[®] ensures extensive functionality and high performance for make-to-order, make-to-stock, engineer-to-order, configure-to-order, repetitive, and mixed mode discrete manufacturing.

VisualQueueERP[®] provides the solutions you need to gain control of all aspects of your business: bill of materials, material requirements planning (MRP) with integrated purchasing, master production schedule (MPS), inventory control, sales force management, purchasing and vendor contracts, job tracking, fully integrated accounting, and much more.

VisualQueueERP[®] is a complete and integrated manufacturing management system for virtually any size enterprise, providing the tools you need for lean manufacturing, internal and external KanBan, back flush processing, bar coding and after-sales service management.

Combined with training and implementation that sets the industry standard, *VisualQueueERP*[®] is your complete manufacturing management solution at a very affordable price.



VisualQueueERP[®] Outstanding Benefits

Here's a few of the many benefits customers have achieved with *VisualQueueERP*[®]:

- Increased inventory turns from 3x to 18x - this can pay for the system in a just a few months
- Reduced sales order fulfillment times by as much as 67%
- Dramatically increased service levels to their customers
- Saved \$20,000 per month using automated self billing invoicing routine - pay back for a large site in less than a year on this feature alone
- Managed substantial growth (over 300%) with no additional indirect staff

VisualQueueERP[®] is a functionally rich and high performance system. *VisualQueueERP*[®] is installed at sites ranging from five to over two hundred users. Typical clients use the powerful *VisualQueueERP*[®] database to :

- Track over 300,000 contacts and 6,000 advertising campaigns
- Manage 85,000 customers, many with more than 5,000 drop shipment addresses
- Add over 8,000 sales orders a week, with up to 9,999 lines on each order
- Add an order with 2,500 lines and 40 different ship to addresses and then ship in same day
- Have over 80,000 parts and over 300,000 product structure entries
- Manage and self-bill external KanBan items

The Future Proofed Choice

- Award winning comprehensive ERP solution, developed over past decade and re-written to take advantage of the Microsoft .NET architecture.
- 100% Microsoft .NET
- Engineered to be intrinsically adaptable, flexible and easy to use.
- Designed to provide strong functional support for modern best business practices.
- Able to support the management needs across a broad spectrum of manufacturing and distribution environments.
- Strict industry standard compliance enables technology advances to be readily incorporated including Web enablement, XML and e-commerce for example.
- An advanced class leading product proven to be capable and scalable for demanding corporate environments.

"We can't solve problems by using the same kind of thinking we used when we created them." - Albert Einstein

About Sabino Creek Software Inc.

Established in 2000 and headquartered in Scottsdale Arizona, Sabino Creek is dedicated to developing and providing "Lean" software solutions that truly add value to small and medium size manufacturing and distribution enterprises. Sabino Creek's "Lean" enterprise software solution is designed to deliver superior functionality, rapid implementation, easy to use with a Microsoft technology standard that is unequaled in the industry.

Sabino Creek offers "Lean" and flexible enterprise software solutions that help today's small to medium size enterprises achieve greater operational efficiency and profitability through seamless integration of lean business processes throughout the enterprise.

Our dedication to Microsoft and our focus on the "Lean Enterprise" have given our flagship product *VisualQueueERP*® a position unmatched in the industry today.

Since our acquisition of the WinMan® ERP product in 2008 and integration of our proprietary Visual Queue Technology, Sabino Creek has become the leading developer of lean enterprise software application products for small to medium size businesses.

Sabino Creek can provide an end to end lean software solution for your company from providing the enterprise software, installation services, lean training, implementation and ongoing support.

Sabino Creek is a privately held company by lean professionals with extensive backgrounds in providing technological advanced software solutions and services.

What industries do we excel in?

VisualQueueERP® works well in small to medium sized companies driven by lean corporate initiatives who are discrete manufacturers and distributors in the following industries:

- Electronics
- Industrial
- Capital Equipment
- Medical Device
- Energy
- Telecommunication

For further information or a demonstration of *VisualQueueERP*® please visit our web site at www.sabinocreek.com or email us at sales@sabinocreek.com.

VisualQueue ERP® Technology

Development environment: VB .NET

Database: Microsoft's SQL Server

Reporting: SQL Server's Reporting Service



Call for a representative near you ►►►

VisualQueue ERP® Software Application Modules

Enterprise Relationship Management (ERM / CRM)

- Customer, Supplier, Lead, Employee Mgmt
- Work Flow and Cueing
- Campaign Management

Customer Service

- Credit Management
- Credit Card Processing
- Pricing
- Quotations
- Sales Orders
- Product Configurator
- Return Material Authorizations
- Service
- Shipping
- UPS / FedEx Integration

Procurement

- Inventory Control
- Purchase Orders / Requisitions / Quotes
- Approved Vendor / Supplier Management
- Receiving

Financials

- General Ledger
- Multicurrency
- Accounts Payable
- Accounts Receivable
- Billing and Invoicing
- Commissions

Manufacturing (Lean & Traditional)

- Product Structures / Routings
- Visual Queue (Lean Execution, Scheduling, Shop Floor Control)
- Engineering Control
- Quality
- Material Requirements Planning
- Master Production Scheduling
- Shop Floor Control
- Forecasting
- Product Structures / Routings
- Engineering Control
- Quality

Jobs Module

- Costing
- Tracking
- BOM Import

System Wide

- Report Builder and Writer
- Integration with Microsoft SQL Reporting Services
- Integrated E-Mail
- Document Management and Control
- Import / Export (excel, PDF)

Sabino Creek Software Inc.

14350 N. Frank Lloyd Wright Blvd
Suite 17
Scottsdale, AZ 85260

Scottsdale AZ 480.889.8950

sales@sabinocreek.com

www.sabinocreek.com

